

NORTHWOOD 232

If you love entertaining, you're sure to love the Northwood, with its interconnected kitchen and dining area that opens directly out to the central courtyard. Two living areas, one positioned at the front of the home and one at the rear, also provide ample space for entertaining. The four bedrooms and main bathroom are located off a separate hallway, which provides clear separation of living and sleeping areas. The master suite offers the luxury and convenience of a spacious ensuite and walk-in robe.



3



2



2



BELFORD FAÇADE



RICHMOND FAÇADE



HYDE FAÇADE



OXLEY FAÇADE



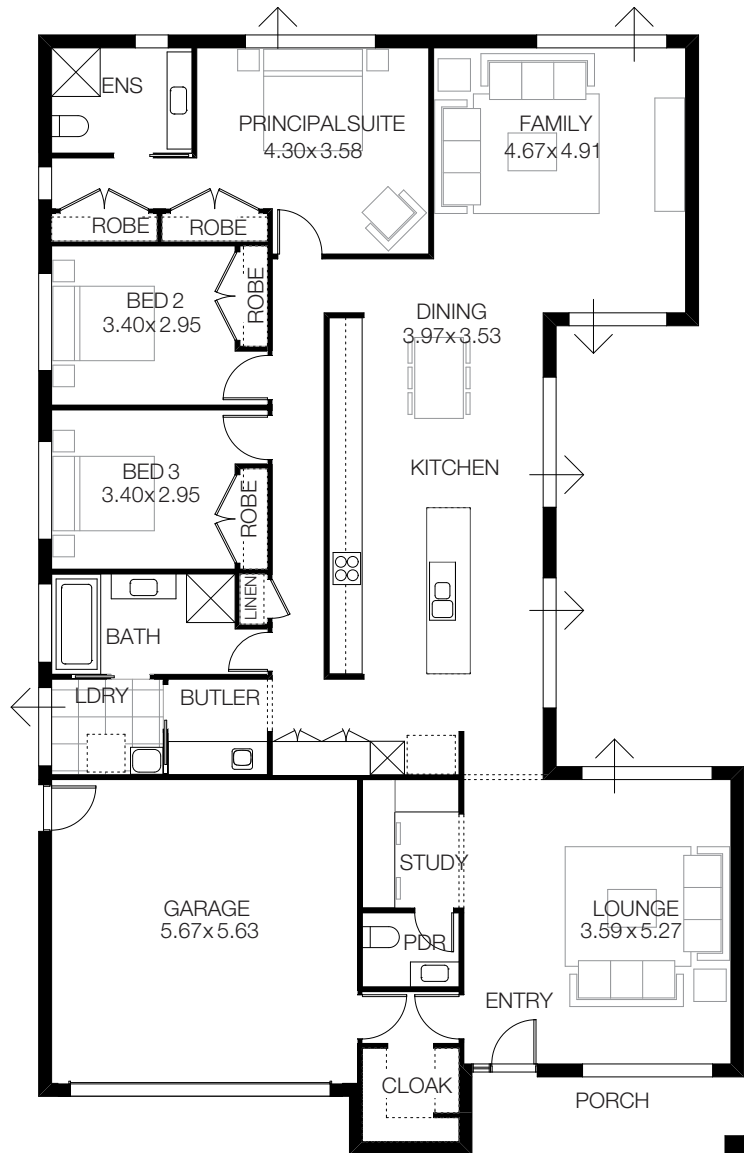
SOMERTON FAÇADE



GREENDALE FAÇADE

NORTHWOOD 232

MIN LOT WIDTH	15m	
MIN LOT DEPTH	30m	
HOME WIDTH	13.07m	
HOME LENGTH	20.75m	
RESIDENCE	189.70sqm	20.41sq
PORCH	7.30sqm	0.78sq
GARAGE	34.70sqm	3.73sq
TOTAL	231.7sqm	24.94sq



“WITH OVER 30 YEARS’ EXPERIENCE, BURBANK OFFERS EXCEPTIONAL SERVICE, OUTSTANDING QUALITY AND A WIDE RANGE OF HOME SOLUTIONS TO SUIT EVERY LIFESTYLE. BURBANK’S MISSION IS TO CREATE PLACES FOR PEOPLE TO CALL HOME.”

Jarrod Sanfilippo
Managing Director

*Copyright conditions. All photos and illustrations are representative only. Floor plans and specifications may be varied by Burbank Australia Pty Ltd (“Burbank”) without notice, the dimensions are diagrammatic only and a Building Contract with final drawings will display correct dimensions and detail. All designs are the property of Burbank and must not be used, reproduced, copied or varied, wholly or in part without written permission from an authorised Burbank representative. Copyright Burbank Australia (NSW) Pty Ltd. ABN 88610822770.



Call 13 BURBANK Visit burbank.com.au

Burbank 
#noplacelikehome